

A FRESH BREATH OF DISCRETE LUXURY

RUNWAL ANTHURIUM





RUNWAL
ZEEK'S .COM
Since 1978

With you, always...

RUNWAL ANTHURIUM

FINE APARTMENTS

NEXT TO R MALL, MULUND (W)

YOUR LITTLE KINGDOM IN THE SKY.

Introducing Runwal Anthurium, Mulund.

Where luxury has been redefined for you.

Luxury, with the added privilege of privacy.

Luxury, that guards your own space.

Luxury, which is enhanced by nature.

Come and discover true luxury at Runwal Anthurium.

The opulent residences offer you modern comforts along with privacy and are surrounded by the tranquility of nature.

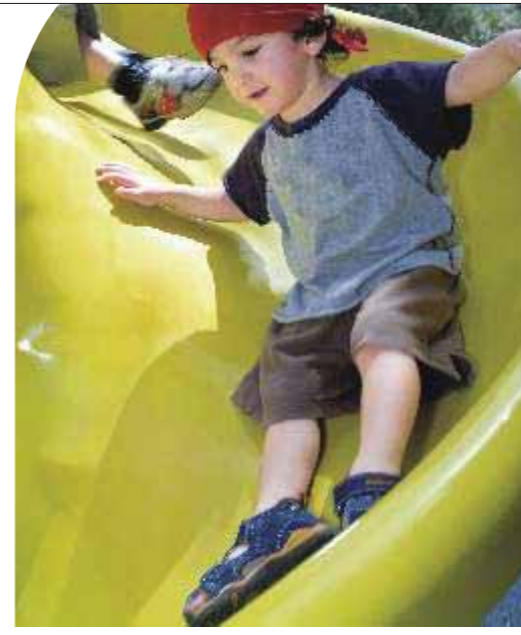
The lush green landscaped gardens spread across the entire expanse add to the picture perfect view of the surrounding hills and the city.





ARTISTIC RENDITION

The residential towers are designed in a unique clover shape to ensure you complete privacy with maximum space utilization and an exclusive entrance. Each of the fully air-conditioned 2, 3 and 4 BHK apartments open on three sides that offer excellent ventilation. Runwal Anthurium is strategically located on L. B. S. Marg, adjacent to R Mall, Mulund a world class mall with a multiplex in its vicinity. Come and experience luxury created especially for you!



LIFESTYLE COMFORTS

At Runwal Anthurium, enjoy the bounties of nature while you relax in your own space. Step out of your home and you have the world at your feet. Stroll on the vast carpet of green, take a dip in a pool of calm or have a ball with your kids. Here are a few of the features:

Entrance Lobby: Be greeted by the grand entrance.

Children's Play Area: Revisit childhood while playing with your children.

Sitting Lounge: Sit, chat and relax whenever you please.

Swimming Pool: Take a leisurely dip or beat your best in timed laps.

Tennis Court: Unwind over an action-packed game.

Amphitheatre: Enjoy the various moods of theater under a star-lit sky.

Lawn for Yoga and Meditation: Regain mental peace and calm.

Temple: Start your day with the Almighty's blessings.

Mini Soccer Field: Challenge your stamina in the mini field.

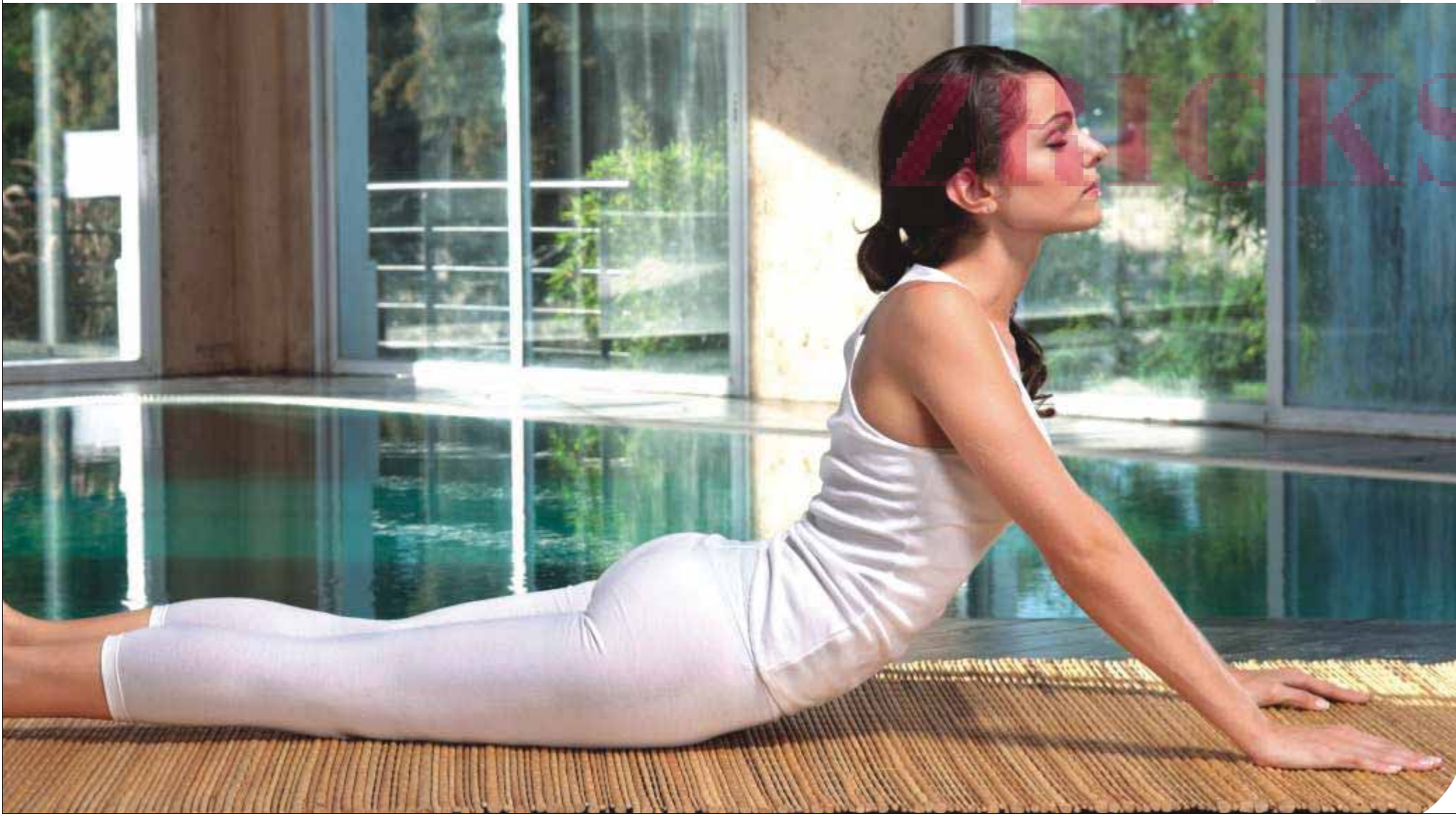
Sitting Spaces for the Elderly: A space for the elderly to relax.



SAMPLE FLAT SHOT



Disclaimer: The plans, specifications, images and other details herein are only indicative and subject to the approval of the concerned authorities. The Developer/Owner reserves the right to change any or all of these in the interest of the development without prior notice or obligation. Artist impressions are used to illustrate the amenities, specifications, images and other details and these may be applicable to select apartments only. Tolerance of +/- 2% is possible in the unit areas on account of design and construction variances. All brands stated are subject to final decision of project architect. This printed material does not constitute an offer and/or contract of any type between the Developer/Owner and the recipient. Any Purchaser/Lessee of this development shall be governed by the terms and conditions of the agreement for sale/lease entered into between the parties, and no details mentioned in this printed material shall in any way govern such transactions. Project financed by HDFC Ltd. and NOC/permission of HDFC Ltd. will be provided for sale of property, if required.



CLUBHOUSE AMENITIES*

Open up to a whole new world at the Runwal, Anthurium Clubhouse. This is where you can have a good time entertaining guests or just spend quality time by yourself. Here are some of the features available in the clubhouse:

- Gymnasium:** Get fitter and healthier with world-class equipments.
- Indoor Games:** Flex your muscles with a game of table tennis or play a game of precision with billiards.
- Card Room:** Play to your strengths in a round of bridge or poker.
- Steam Room:** Calm your muscles after a thorough workout.
- Multipurpose Hall:** Whatever be the occasion, celebrate in style.
- Library:** Find bestsellers and appease the bookworm in you.
- Party Terrace:** Host the best parties in any season under the open sky.
- Convenience Shop:** Find essentials for yourself and your home at the drop of a hat.

*Conditions Apply



LIFESTYLE CONVENIENCES - INTERNAL:

- Thoughtfully designed for maximum space utilization
- Apartment with cross ventilation
- Earthquake resistant structure
- High speed lifts
- AC flats in premium tower & AC provision in other towers

Specification:

- Flooring - Vitrified tiles/ Composite marble
- Deck - Wooden effect tiles
- Bed Rooms - Vitrified flooring

Kitchen:

- Granite Platform with S. S. single bowl drain sink & dado tile till door height

Bathrooms:

- C. P. Fittings & Sanitary Ware - American Standard or similar make
- Designer tiles in all bathrooms
- Geyser/ Boiler in all bathrooms
- Concealed plumbing with premium quality sanitary fitting
- Exhaust fans in all bathrooms
- Four fixture master bed toilet with composite marble cladding on all walls*

Doors / Windows:

- Reputed brands anodized aluminum sliding windows.
- S. S. Glass railing for deck area
- Bedroom and toilet door shutters – laminated flush doors
- Main Door Shutter - Laminated door of reputed brand

Internal Finish:

- Paint - Acrylic/ OBD paint
- Gypsum finished walls

Electrical:

- Electrical Switches - Premium brand
- Designer entrance & Lift lobby with Vitrified tiles

Security:

- Video door phone
- Intercom
- CCTV surveillance*

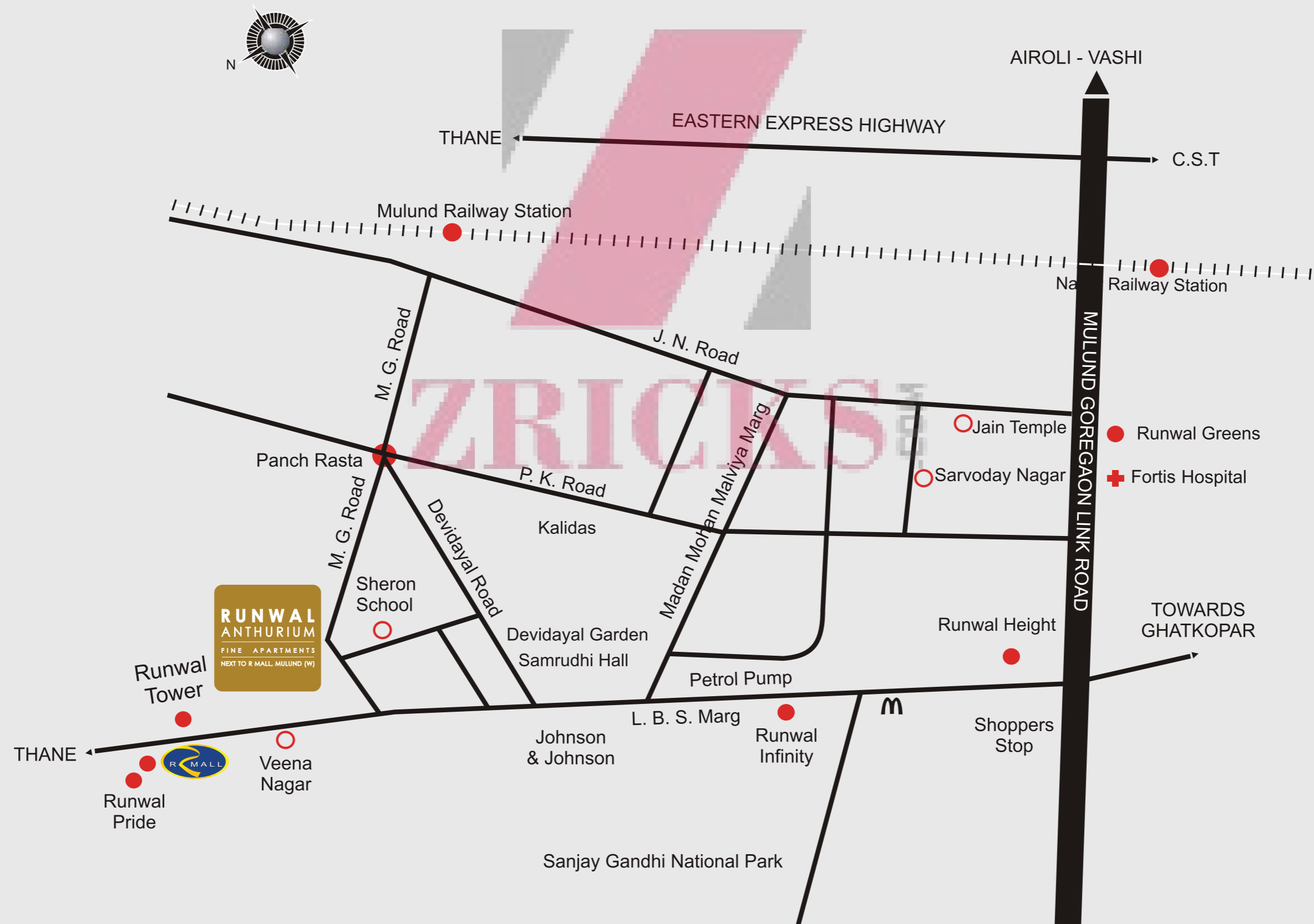
*Available in premium tower.

ZRICKS

A CONVENIENT LOCATION

- 5 minutes from Mulund's favourite shoppertainment destination – R Mall
- 5 minutes from Mulund railway station • 5 minutes from Mulund check naka
- 5 minutes from Eastern Express Highway
- 30 minutes drive from the international airport
- Hospitals within 3 km vicinity: Fortis, Dhanvantry, Daxini and Hira-Mongi
- Prestigious schools within 3 km: St. Mary's, St. Pius, SMPR, Friends and Billabong

LOCATION MAP

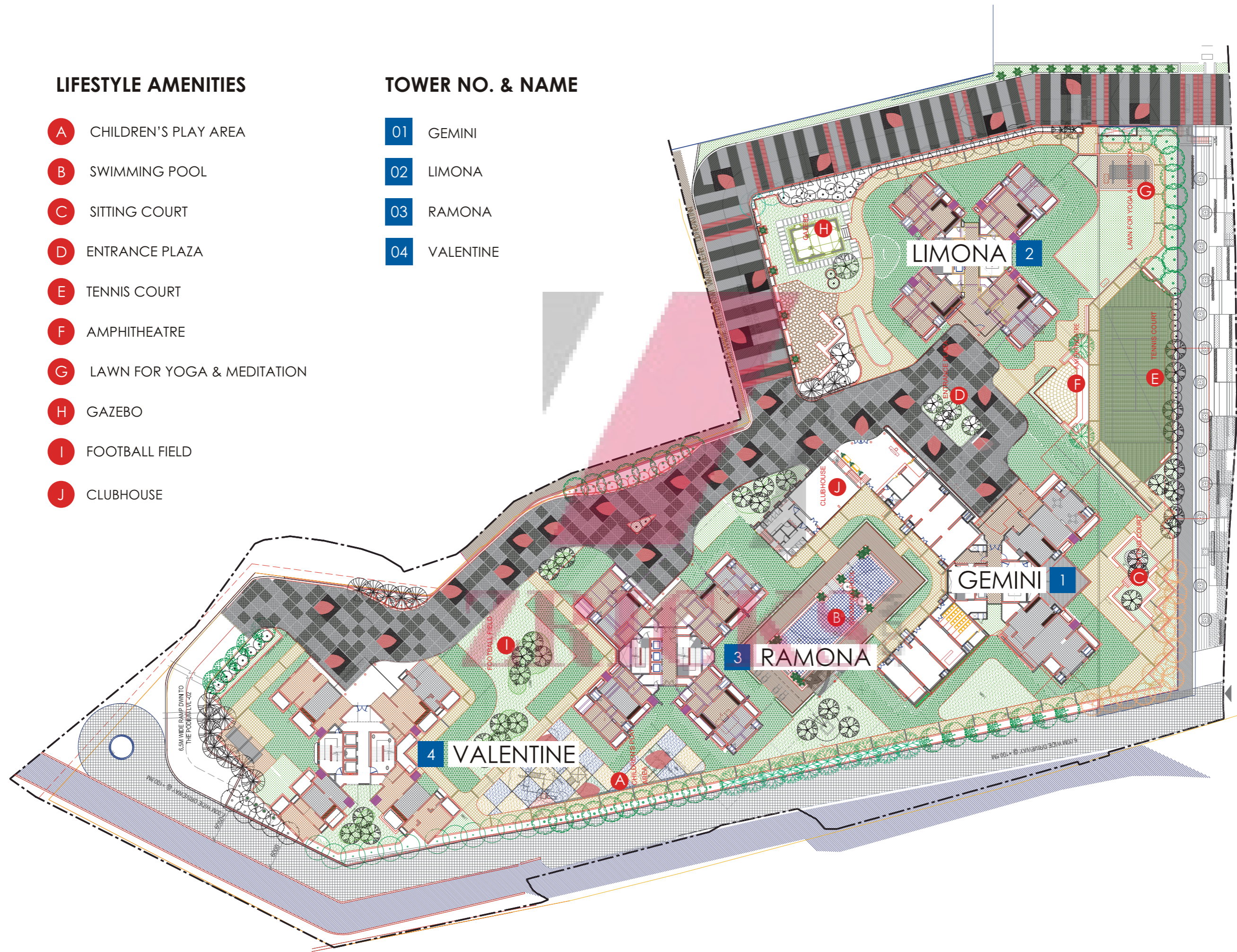


LIFESTYLE AMENITIES

- A CHILDREN'S PLAY AREA
- B SWIMMING POOL
- C SITTING COURT
- D ENTRANCE PLAZA
- E TENNIS COURT
- F AMPHITHEATRE
- G LAWN FOR YOGA & MEDITATION
- H GAZEBO
- I FOOTBALL FIELD
- J CLUBHOUSE

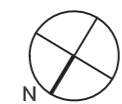
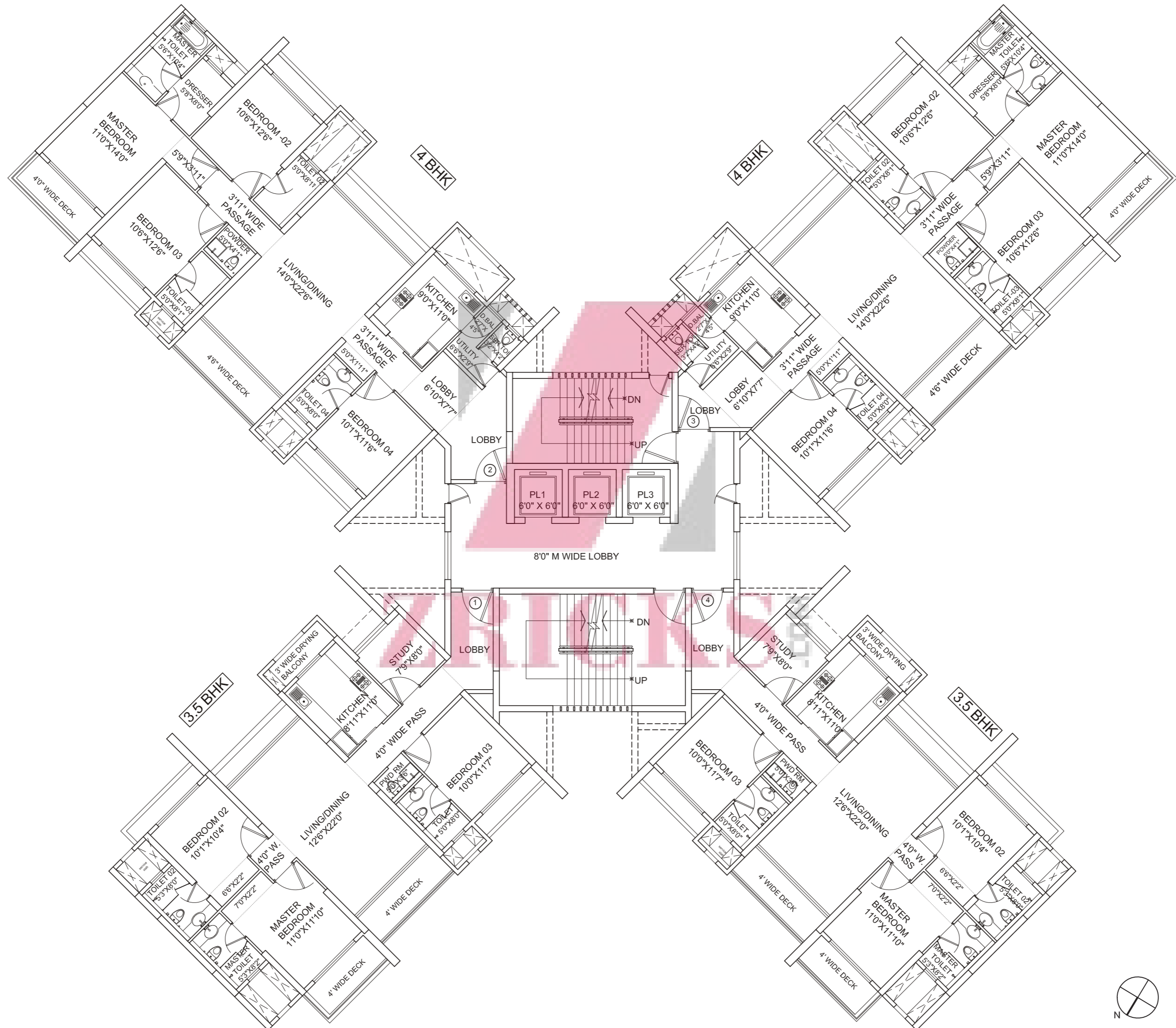
TOWER NO. & NAME

- 01 GEMINI
- 02 LIMONA
- 03 RAMONA
- 04 VALENTINE

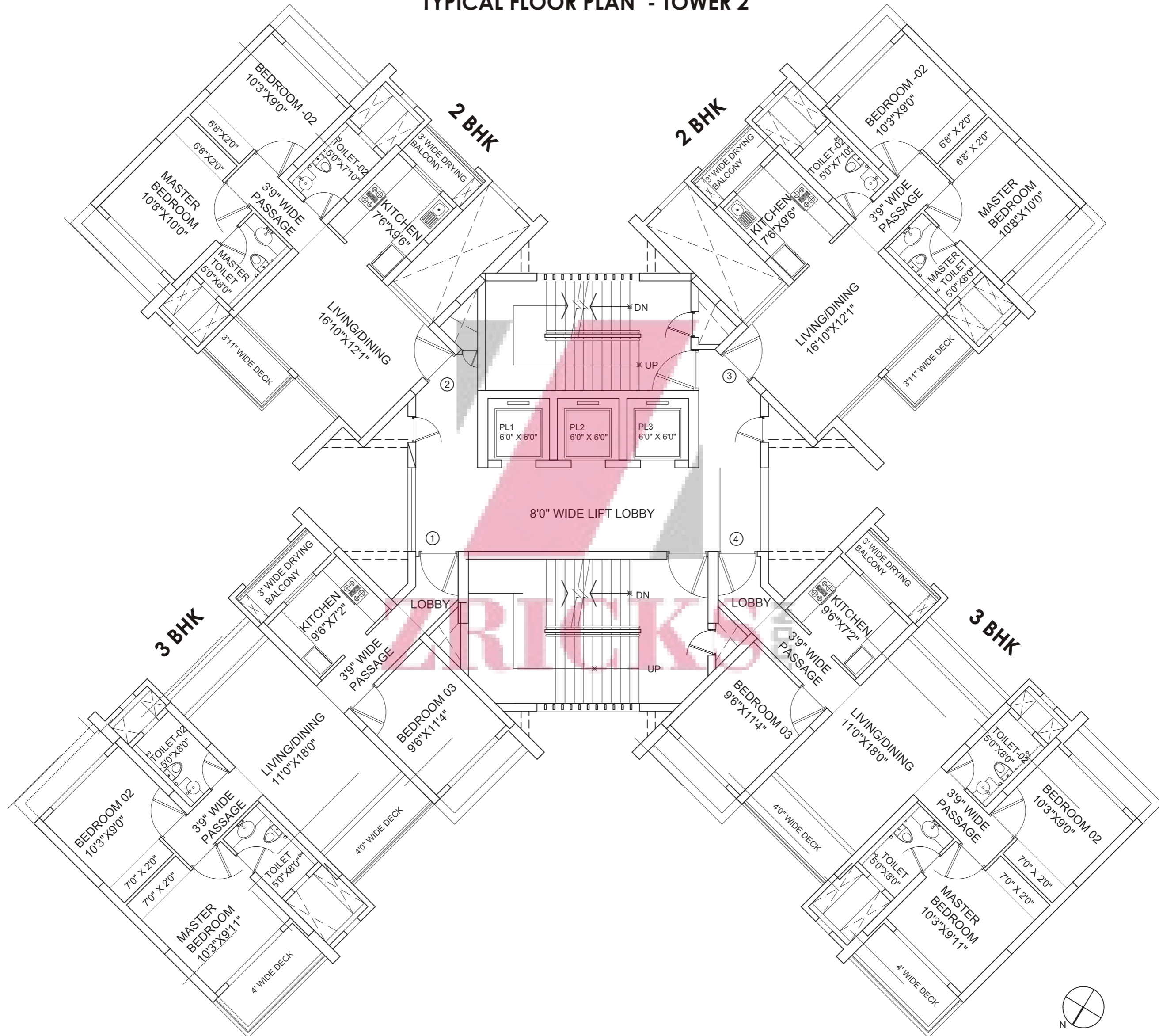


Disclaimer: The plans, specifications, images and other details herein are only indicative and subject to the approval of the concerned authorities. The Developer/Owner reserves the right to change any or all of these in the interest of the development without prior notice or obligation. Artist impressions are used to illustrate the amenities, specifications, images and other details and these may be applicable to select apartments only. Tolerance of +/- 2% is possible in the unit areas on account of design and construction variances. All brands stated are subject to final decision of project architect. This printed material does not constitute an offer and/or contract of any type between the Developer/Owner and the recipient. Any Purchaser/Lessee of this development shall be governed by the terms and conditions of the agreement for sale/lease entered into between the parties, and no details mentioned in this printed material shall in any way govern such transactions. Project financed by HDFC Ltd. and NOC/permission of HDFC Ltd. will be provided for sale of property, if required.

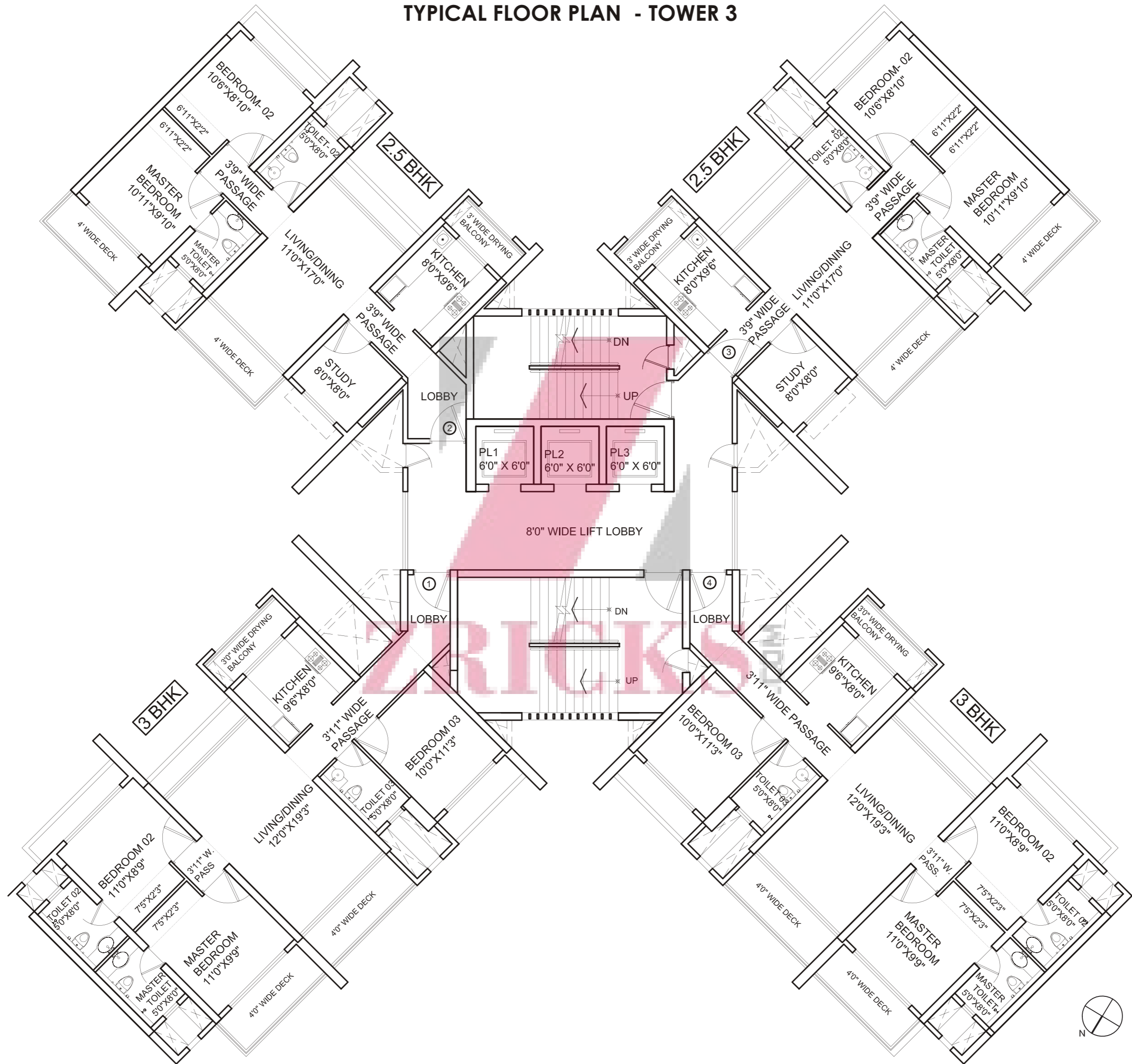
TYPICAL FLOOR PLAN - TOWER 1



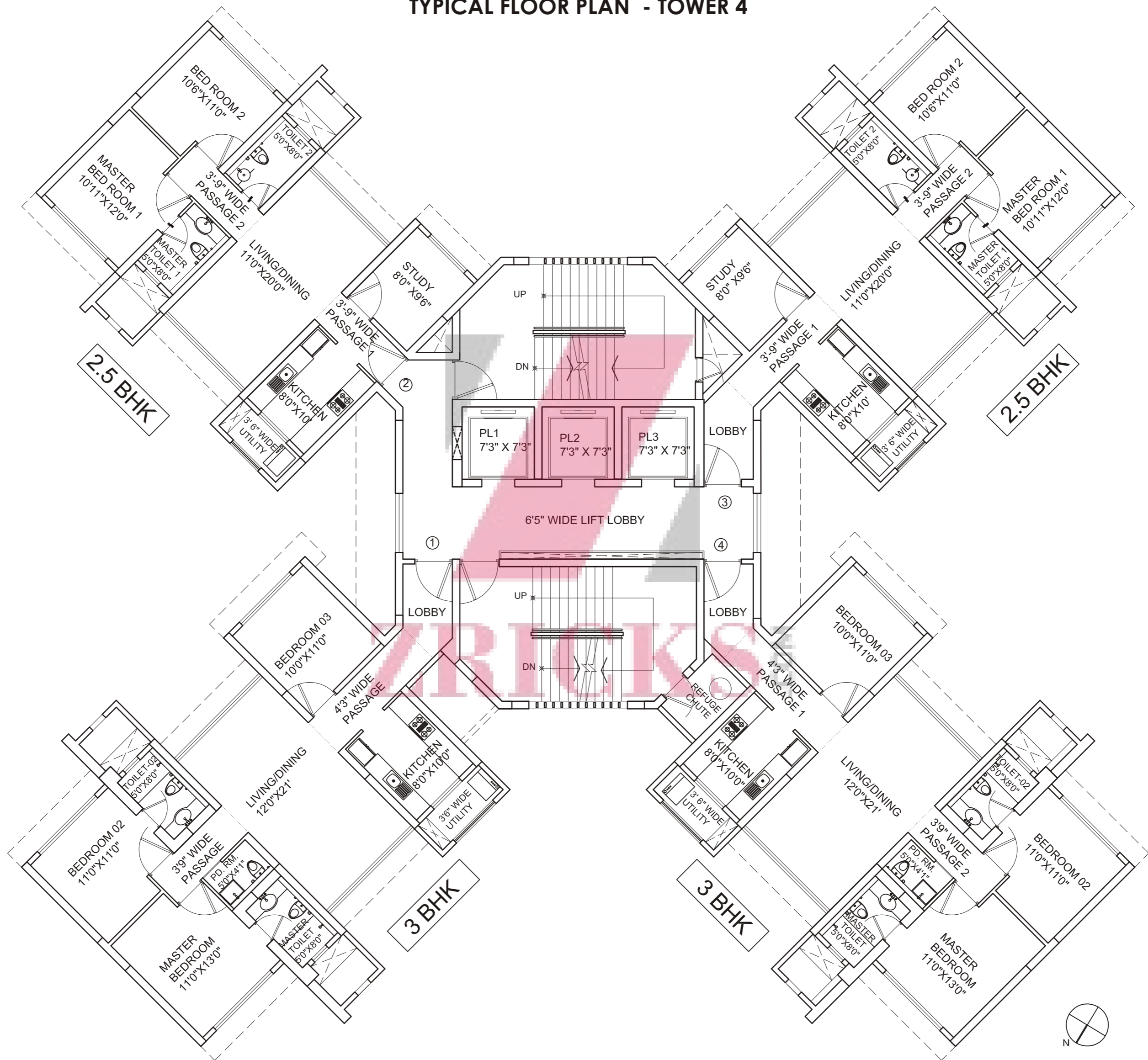
TYPICAL FLOOR PLAN - TOWER 2



TYPICAL FLOOR PLAN - TOWER 3



TYPICAL FLOOR PLAN - TOWER 4





CURRENT PROJECTS

Runwal Elegante
Lokhandwala, Andheri (W)



3, 4 & 5 BHK

Eirene
Balkum, Thane



1, 2 & 3 BHK

R Square Offices
Next to R Mall, Mulund



Hi-Tech Offices
1000 – 15000 sq.ft.

The Reserve
Next to Four Seasons, Worli



3 & 4 BHK

LUXURY RESIDENCES

Runwal Pearl
Ghodbunder Rd., Thane (W)



2, 3 (S) & 3 (L) BHK

READY POSSESSION

MyCity, Dombivli



1, 2 & 3 BHK

THE RUNWAL GROUP

In the year 1978, a visionary – Mr. Subhash S. Runwal set the foundation for a company to shape the dreams of families across the city. Today, the Runwal Group is revered as one of the leading real estate developers in Mumbai. Our first and foremost focus has been to exceed our customers' expectations and fulfil their future aspirations. With a unique multi-domain portfolio that covers the residential, commercial and retail space, we touch people's lives in many different ways.

Our every project – be it a residential apartment, mega shopping mall or office complex – is built on our values of reliability and transparency. Over the years, we have given the city more than 60 landmark projects and provided over 10,000 families with a lifetime of happiness – a dream home.

BRAND ETHOS

Our customers are the centre of our universe, and everything revolves around our customers' desires. In a way, our guiding philosophy can be summed up in one word: 'YOU'. We believe in earning your trust and building a long-lasting relationship. It reflects in our brand's positioning statement **"With You, Always..."** The three dots in the statement signify a relationship that continues forever.

CORPORATE PHILOSOPHY

We have always focused on designing and building projects around your needs and wants. Our every project starts with a detailed market research to understand your requirements. It includes understanding your needs from the project, your personal preferences in architecture and aesthetics and your desired level of lifestyle.

We also conduct a geographic research to study the traffic scenario, population density and developments. Accordingly, we design and build projects with huge parking spaces, multiple access gates and other lifestyle conveniences, which answer the future needs of the society.

ENVIRONMENTAL FOCUS

Apart from your personal requirements, we take into consideration the needs of the natural surroundings. We conduct a study on the current bio-diversity of the flora and fauna and the possible impact of the project on the same. On the basis of this analysis, we identify the developments needed to offset the environmental impact like introducing waste water management, development of the green lung through landscapes and peripheral green development amongst many others.

THE RIGHT PARTNERS

"No two projects are the same." At the Runwal Group, we don't just believe in this axiom. We live by it. That's why we meticulously choose the right partners – architects,

technical consultants, landscape designers, planning engineers and technical engineers – who would be able to meet the specific requirements of each project. Time and again, we undertake several initiatives to connect with the local channel partners to get a true understanding of your preferences and desired amenities.

CUSTOMER CARE

At the Runwal Group, we believe in giving you more than you expect. Because you are at the heart of everything we do. We focus our efforts first and foremost towards your needs and requirements. Our experts are always there to provide you with assistance and guidance at every step.

In every project we undertake, you will find a dedicated team, who will address your queries and assist you in the documentation process. If you want to opt for a home loan, we will help you with that too. Our team will provide you complete assistance in identifying the right finance provider and negotiating the best terms for you.

Our customer care team will regularly update you on the status and development of the project after booking. We carry out a three step process before the apartment is given to you for possession. Firstly, the apartment is inspected by the project team, then by the possession team and finally by the facilities team. After the clearance is obtained from all three divisions, we will invite you to come and inspect the apartment to your satisfaction.

At the time of possession, our facilities team will help you in moving in and make sure that your family receives a grand welcome. But our facilities team's services don't just end here. Our team will continue to provide you assistance on a day-to-day basis – be it getting a plumber, finding a maid or getting your house painted. We make sure that our every customer-centric service adds value at all times.

QUICK RESPONSE INITIATIVE

We believe that giving a personal service helps us in understanding your needs. That's why we are at your service through an interactive customer response programme, whenever, wherever. We are the first real estate developer to initiate this response programme, across the digital platform with a maximum response time of 24 hours to your queries.

EASY CONNECT

At the Runwal Group, we connect with our audience through several group activities, customer service channels and digital avenues. Apart from exploiting the regular media options, we communicate through various digital platforms – websites, microsites, banners, direct response emailers, Facebook, Twitter and others. We have always focused on creating precise marketing collaterals, which assist you in understanding the project and taking the right decision.



Site Address: Runwal Anthurium, Old Gabriel Factory, Opp. Veena Nagar, L. B. S. Marg, Mulund (W).

For Details, Call: 8898717493, 9892636622, 9920056007, 022 67417416/ 18 | Email: anthurium@runwal.com

Corporate Office: Runwal & Omkar E Square, 5th Floor, Nr. Sion Chunabhatti Signal, Off Eastern Express Highway,

Sion, Mumbai. Tel.: 022 61133000